

CERTIFICATE IN APPLIED SOCIAL RESEARCH

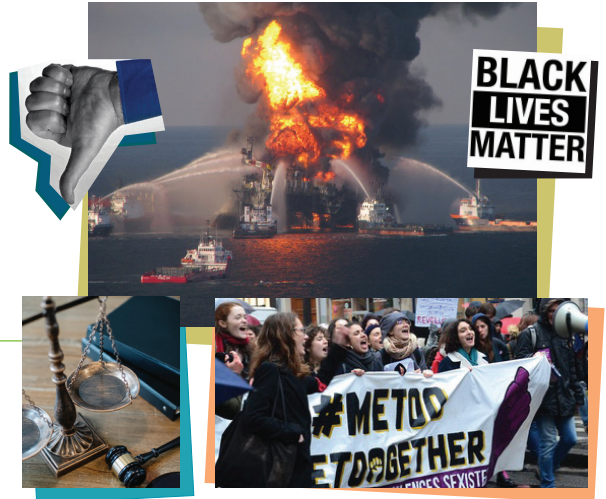
Acquire the skills necessary to identify and create new pathways for social change!

Identify, gather, interpret, and organize information about today's pressing social issues.

Get hands-on training with the research tools needed to produce and communicate evidence-driven arguments about how to address social inequalities and social justice issues.

Graduate with a strategic advantage in the competitive job market!

Open to all majors!



REQUIRED COURSES: *The certificate is a total of 15 credits, and only "C" or above grades will count.*

SOC 311	Sociological Research Methods	3	prereq: SOC 100 or 105, sophomore standing
SOC 314	Applications of Quantitative Research	3	prereqs: SOC 311 or concurrent enrollment, SOC 210 or STAT 201
SOC 315	Applications of Qualitative Research	3	prereq: SOC311 or concurrent enrollment

SELECT TWO COURSES: 6 check catalog for prereqs for each course below

ANTH 441	Method in Cultural Anthropology
ANTH 443	Ethnographic Field Methods
ANTH 444	Cultures of Virtual Worlds–Research Methods
CO 301C	Writing in the Disciplines: Social Sciences (GT-CO3)
CO 302	Writing in Digital Environments (GT-CO3)
ECON 235/LB 235	Working With Data
ECON 335/AREC 335	Introduction to Econometrics
ETST 441	Indigenous Knowledges
ETST 493	Capstone Seminar
GR 315	Quantitative Geographical Methods
HIST 392	Seminar in Historical Methods
JTC 300	Strategic Writing and Communication (GT-CO3)
JTC 319	Science and Environmental Communication
JTC 417	Data Visualization Design
POLS 320	Empirical Political Analysis
POLS 459	Program Evaluation for Public Administrators
POLS 465	Public Policy Analysis
SPCM 334	Co-Cultural Communication
SPCM 335	Gender and Communication
SPCM 401	Rhetoric in Social Movements
SPCM 434	Intercultural Communication



Enrollment or questions:
CLA-Soc_Dept_Info@colostate.edu
 970-491-6044
 1100 Meridian Ave. Building A
www.sociology.colostate.edu

Our 15-credit Certificate in Applied Social Research is a great addition to any major.

